

---

---

---

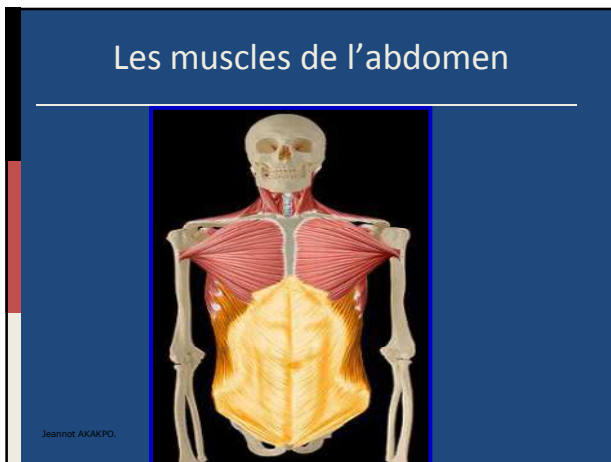
---

---

---

---

---



---

---

---

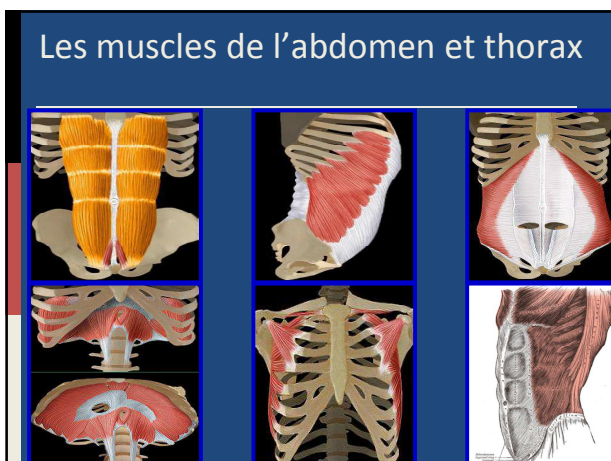
---

---

---

---

---



---

---

---

---

---

---

---

---

## Les muscles de l'abdomen et du thorax

- ❑ Droit de l'abdomen
- ❑ Grand oblique externe
- ❑ Petit oblique interne
- ❑ Transverse
- ❑ Le dentelé antérieur
- ❑ Les intercostaux (interne et externe) et subcostaux.
- ❑ Le diaphragme
- ❑ Ligne blanche

Jeannot AKAKPO.

---

---

---

---

---

---

---

---

## Le droit de l'abdomen: insertions



Jeannot AKAKPO.

---

---

---

---

---

---

---

---

## Le droit de l'abdomen: insertions

### Origine :

- ❑ Épine pubienne.

### Terminaison :

- ❑ Épine pubienne.
- ❑ Cartilage des 5,6,7ème côtes
- ❑ Appendice xiphoïde

Jeannot AKAKPO.

---

---

---

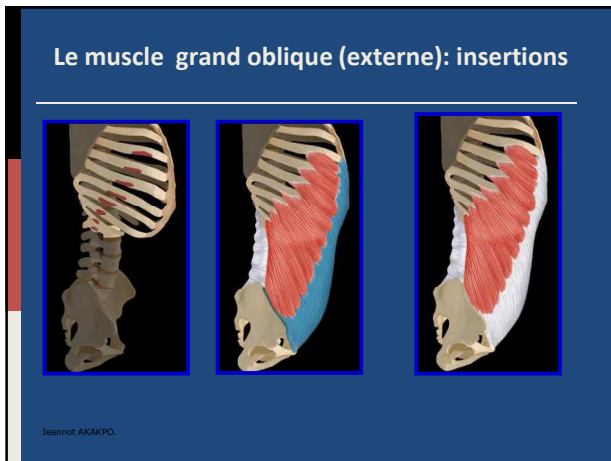
---

---

---

---

---



---

---

---

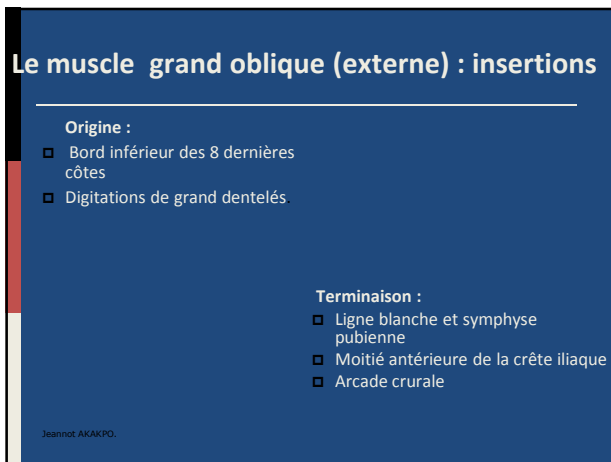
---

---

---

---

---



---

---

---

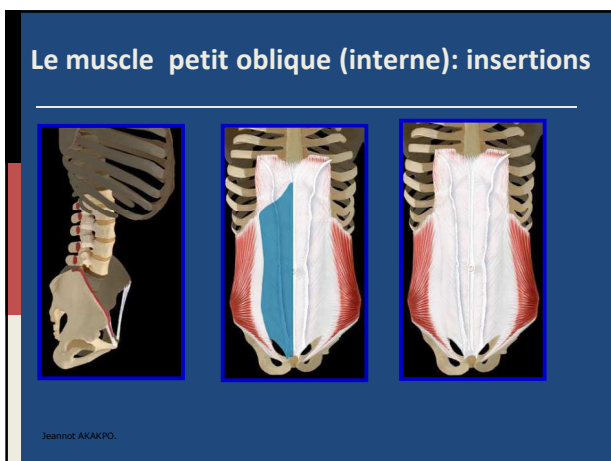
---

---

---

---

---



---

---

---

---

---

---

---

---

### Le muscle petit oblique (interne): insertions

**Origine:**

- ❑ Vertèbres lombaires
- ❑ Moitié externe de l'arcade crurale
- ❑ Deux tiers antérieur de la crête iliaque
- ❑ Aponévrose dorso-lombaire

**Terminaison :**

- ❑ Cartilages costaux des 8, 9 et 10<sup>ème</sup> côtes
- ❑ Gaine du droit de l'abdomen
- ❑ Ligne blanche

Jeannot AKAKPO.

---

---

---

---

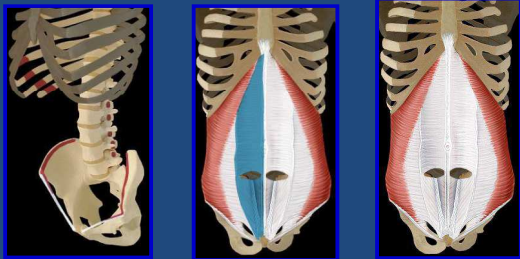
---

---

---

---

### Le muscle transverse: insertions



Jeannot AKAKPO.

---

---

---

---

---

---

---

---

### Le muscle transverse: insertions

**Origine :**

- ❑ 4 dernières côtes
- ❑ Aponévrose dorso-lombaires
- ❑ Crête iliaque (lèvre interne)
- ❑ Arcade crurale.

**Terminaison :**

- ❑ Épine du pubis
- ❑ Crête pectinéale
- ❑ Ligne blanche

Jeannot AKAKPO.

---

---

---

---


---

---

---

---

### Le dentelé antérieur (grand) : insertions



Jeannot AKAKPO.

---

---

---

---

---

---

---

---

### Le muscle transverse: insertions

Origine :

- ▣ Côtes - 10 premières

Terminaison :

- ▣ Épine de la scapula

Jeannot AKAKPO.

---

---

---

---

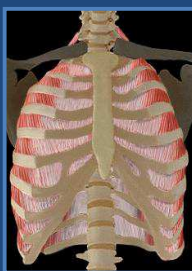
---

---

---

---

### Les intercostaux (internes et externes) et les subcostaux



Origine:

- Côtes supérieures

Terminaison :

- Côtes inférieures

Jeannot AKAKPO.

---

---

---

---

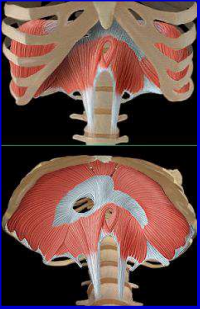
---

---

---

---

### Le diaphragme



- ❑ Origine :
  - sternale
  - costale
  - Vertébrale : rachis lombaire
- ❑ Terminaison :
  - centre tendineux

Jeannot AKAKPO.

---

---

---

---

---

---

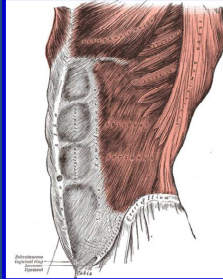
---

---

### La ligne blanche: insertions

Origine:  
face antérieure de la xiphoïde  
(extrémité du sternum)

Terminaison:  
bord supérieur du pubis.



C'est une Structure fibreuse située sur la ligne médiane de l'abdomen. Elle est composée principalement d'un tissu conjonctif de collagène.

Jeannot AKAKPO.

---

---

---

---

---

---

---

---

### Les muscles du bassin

3 couches

- ❑ 1<sup>ere</sup> Couche:
  - TFL
  - Grand fessier
- ❑ 2<sup>eme</sup> Couche
  - Moyen fessier
- ❑ 3<sup>eme</sup> Couche
  - Petit fessier
  - Piriforme (pyramidal).
  - Obturateur interne et externe
  - Jumeau supérieur et inférieur
  - Carré crural (fémur).

Jeannot AKAKPO.

---

---

---

---

---

---

---

---

## Les muscles du bassin

### ■ Face antérieure

- Le carré des lombes
- Le psoas iliaque
- Le psoas mineur

### ■ Face postérieure

- TFL (tenseur du fascia lata).
- Grand, moyen et petit fessier
- Piriforme (pyramidal).
- Obturateur interne et externe
- Jumeau supérieur et inférieur
- Carré crural

Jeannot AKAKPO.

---

---

---

---

---

---

---

---

## Les muscles du bassin

- Les pelvi-trochantériens (rotateurs externes du fémur) constituent un groupe fonctionnel composé de 6 muscles:

- Pyramidal ou piriforme
- carré crural (carré du fémur)
- obturateur interne
- obturateur externe
- jumeau supérieur
- jumeau inférieur

Jeannot AKAKPO.

---

---

---

---

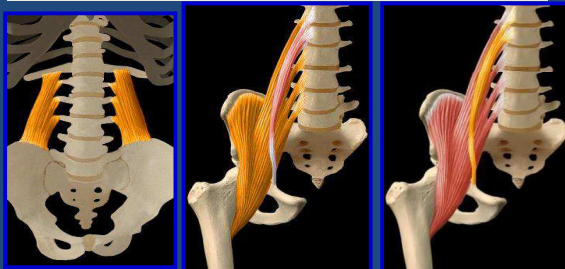
---

---

---

---

## La face antérieure du bassin: les muscles



Jeannot AKAKPO.

---

---

---

---

---

---

---

---

### La face antérieure du bassin: les muscles

- ❑ Le carré des lombes
- ❑ Le psoas iliaque
- ❑ Le psoas mineur

Jeannot AKAKPO.

---

---

---

---

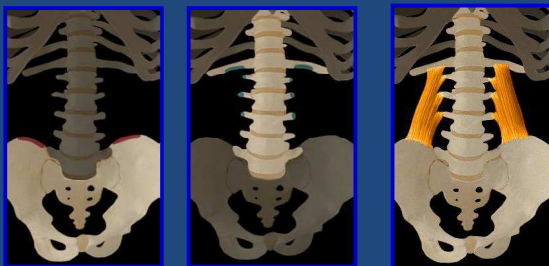
---

---

---

---

### Le carré des lombes: insertions



Jeannot AKAKPO.

---

---

---

---

---

---

---

---

### Le carré des lombes: insertions

Origine :

- ❑ Partie postérieure de la crête iliaque
- ❑ Apophyse transverse des 4 dernières vertèbres.

Terminaison :

- ❑ Apophyse transverse des 4 premières vertèbres lombaires
- ❑ Bord inférieur de la 12ème côte

Jeannot AKAKPO.

---

---

---

---

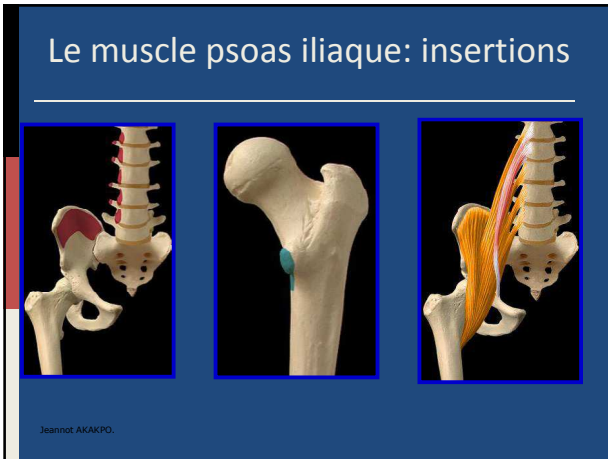
---

---

---

---





---

---

---

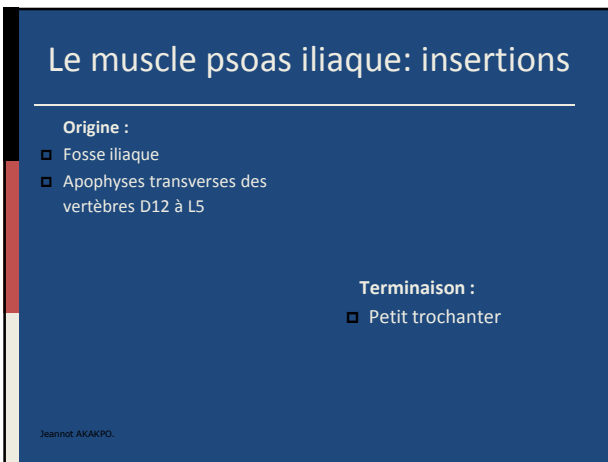
---

---

---

---

---



---

---

---

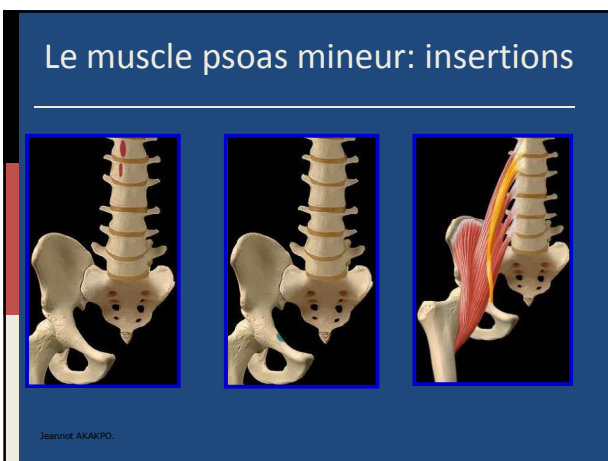
---

---

---

---

---



---

---

---

---

---

---

---

---

### Le muscle psoas mineur: insertions

**Origine :**

- Vertèbres lombaires et thoraciques

**Terminaison :**

- Éminence iliopubienne

Jeannot AKAKPO.

---

---

---

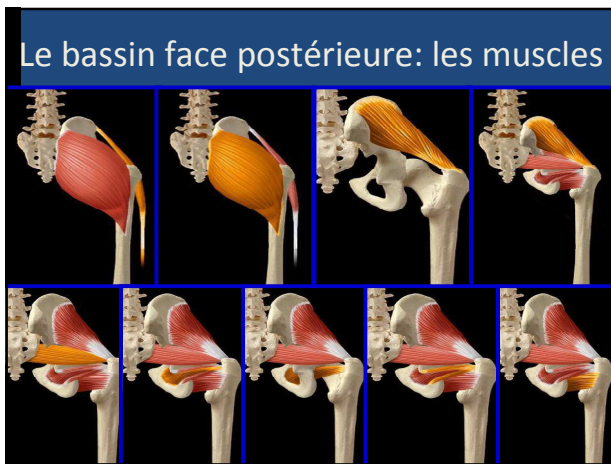
---

---

---

---

---



---

---

---

---

---

---

---

---

### Le bassin face postérieure: les muscles

- TFL
- Grand fessier
- Moyen fessier
- Petit fessier
- Piriforme ou pyramidal
- Obturateur interne
- Obturateur externe
- Jumeau supérieur
- Jumeau inférieur
- Carré du fémur ou crural

Jeannot AKAKPO.

---

---

---

---

---

---

---

---

### Le bassin face postérieure: les muscles

- ❑ Le deltoïde fessier = ensemble fonctionnel composé de deux muscles:
  - Le grand fessier (plan superficiel)
    - ❑ en arrière
  - Le tenseur du fascialata
    - ❑ en avant.

Jeannot AKAKPO.

---

---

---

---

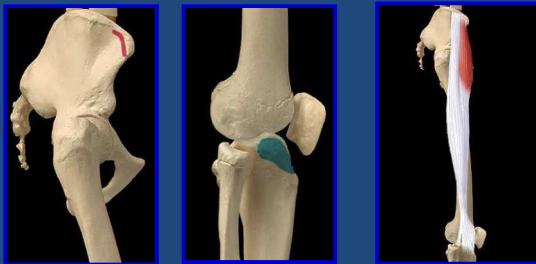
---

---

---

---

### Tenseurs du fascialata: insertions



Jeannot AKAKPO.

---

---

---

---

---

---

---

---

### Le TFL: insertions

- Origine :**
- ❑ Partie antérieure de la lèvre externe de la crête iliaque.
- Terminaison :**
- ❑ Bandelette ilio-tibiale
  - ❑ Face latérale du tibia

Jeannot AKAKPO.

---

---

---

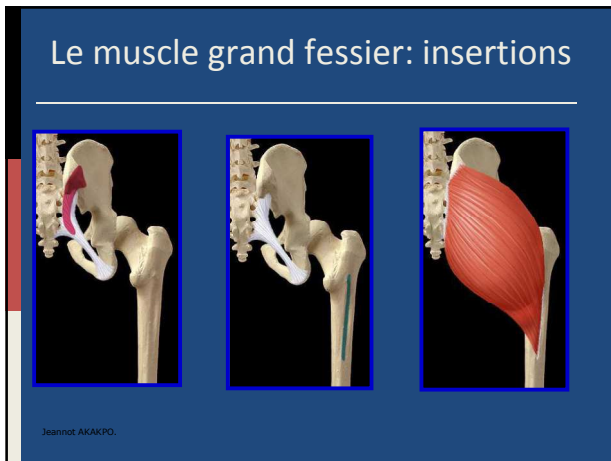
---

---

---

---

---



---

---

---

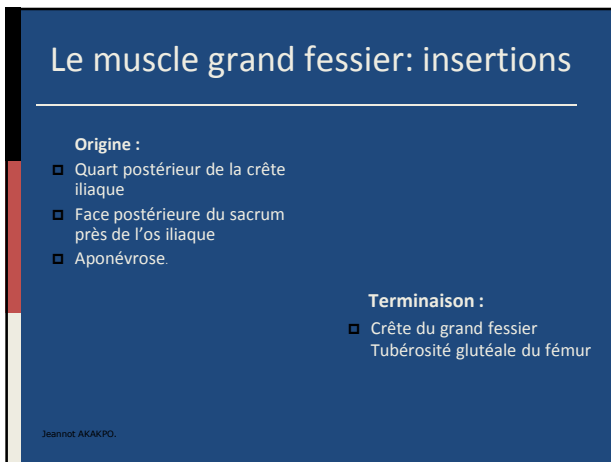
---

---

---

---

---



---

---

---

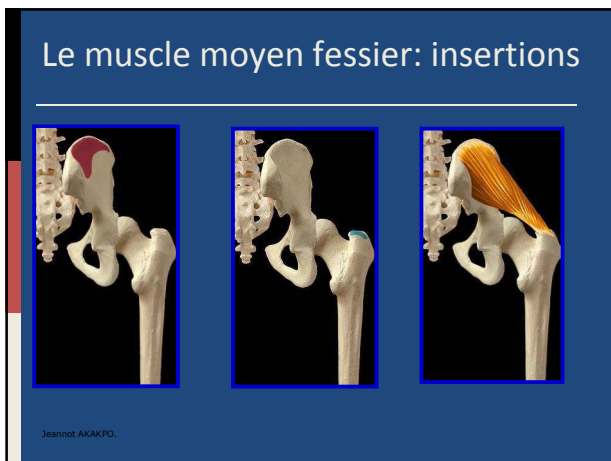
---

---

---

---

---



---

---

---

---

---

---

---

---

### Le muscle moyen fessier: insertions

**Origine :**

- ❑ Fosse iliaque externe
- ❑ Face glutéale de l'aile iliaque

**Terminaison :**

- ❑ Face latérale du grand trochanter du fémur

Jeannot AKAKPO.

---

---

---

---

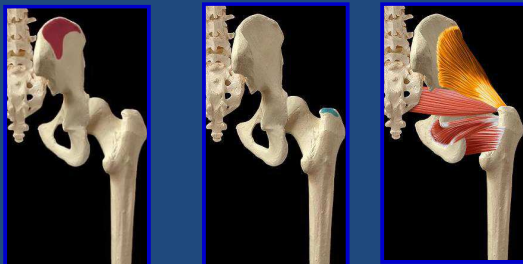
---

---

---

---

### Le muscle petit fessier: insertions



Jeannot AKAKPO.

---

---

---

---

---

---

---

---

### Le muscle petit fessier: insertions

**Origine :**

- ❑ Fosse iliaque externe
- ❑ Face glutéale de l'aile iliaque

**Terminaison :**

- ❑ Bord antérieur du grand trochanter

Jeannot AKAKPO.

---

---

---

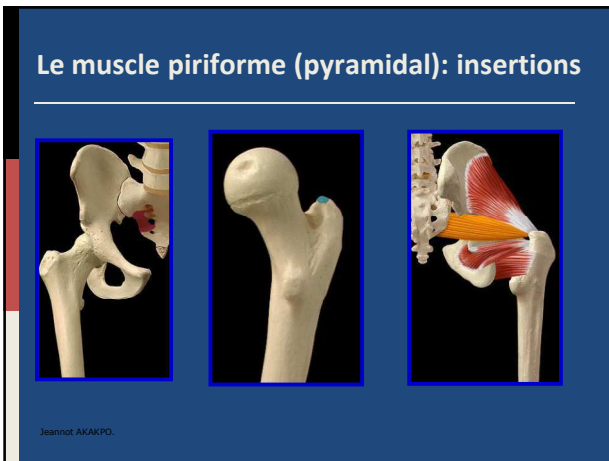
---

---

---

---

---



---

---

---

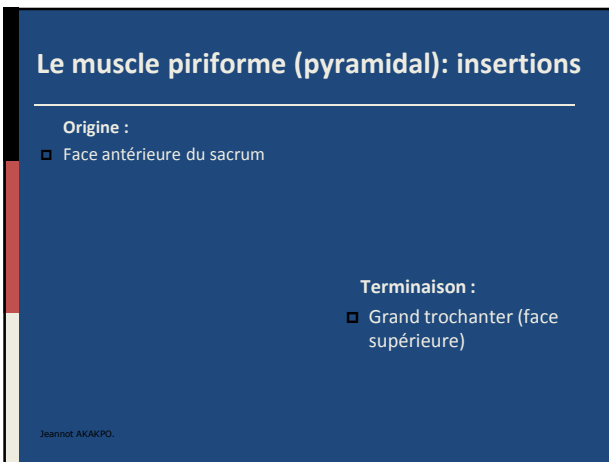
---

---

---

---

---



---

---

---

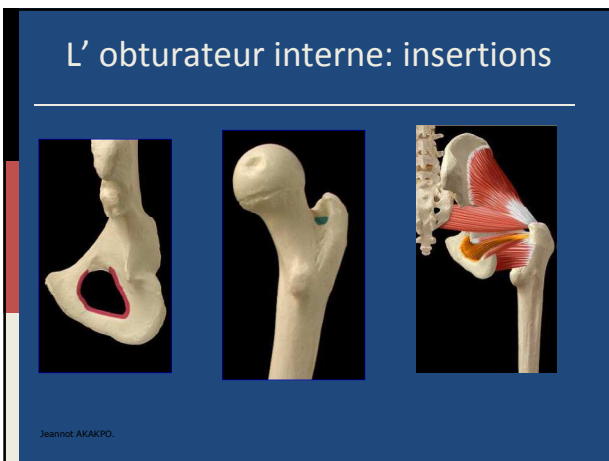
---

---

---

---

---



---

---

---

---

---

---

---

---

### L'obturateur interne: insertions

---

**Origine :**

- Trou obturateur

**Terminaison :**

- Fosse trochantérique

Jeannot AKAKPO.

---

---

---

---

---


---

---

---

### L'obturateur externe: insertions

---



Jeannot AKAKPO.

---

---

---

---

---

---

---

---

### L'obturateur externe: insertions

---

**Origine :**

- Trou obturateur

**Terminaison :**

- Fosse trochantérique

Jeannot AKAKPO.

---

---

---

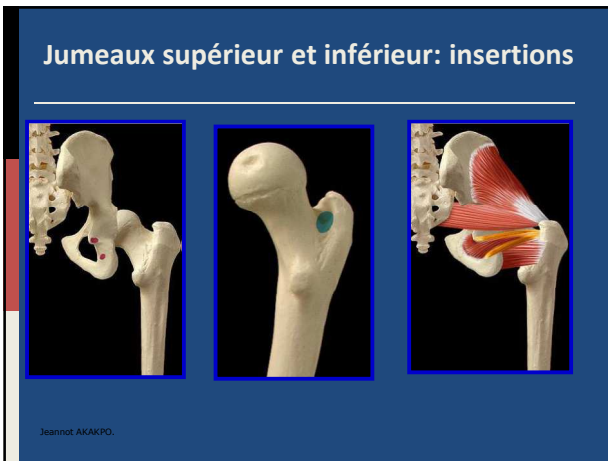
---

---

---

---

---



---

---

---

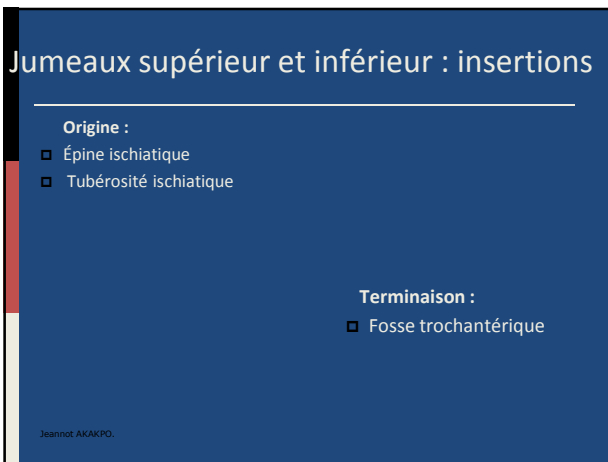
---

---

---

---

---



---

---

---

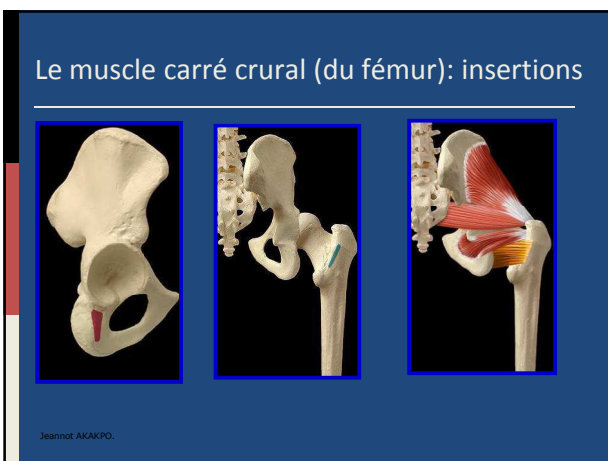
---

---

---

---

---



---

---

---

---

---

---

---

---



### Le muscle carré du fémur: insertions

Origine :

- ▣ Ischion
- ▣ Aile iliaque

Terminaison :

- ▣ Face postérieure du grand trochanter.

Jeannot AKAKPO.

---

---

---

---

---

---

---

---